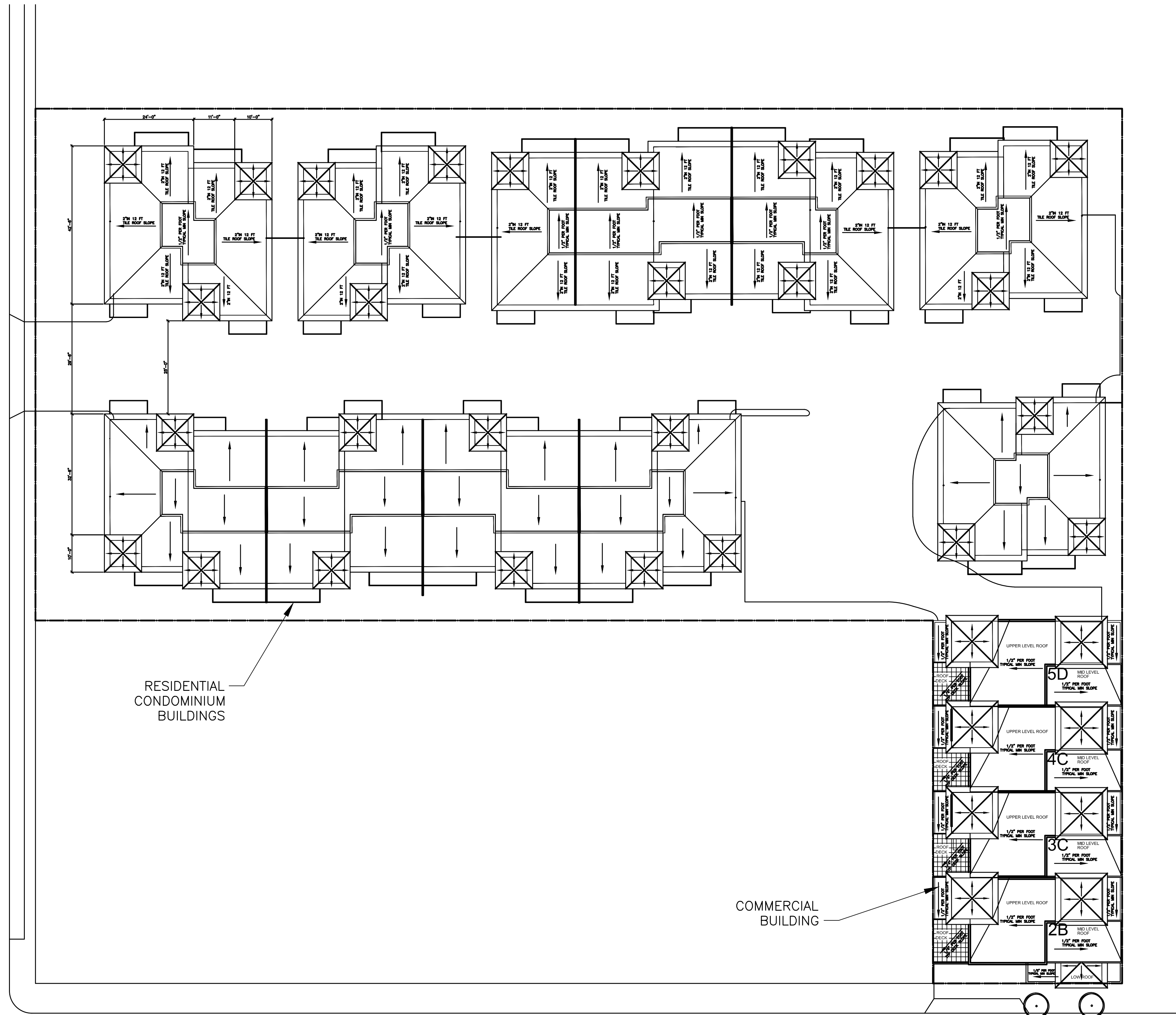


250 TH STREET



RESIDENTIAL  
CONDOMINIUM  
BUILDINGS

COMMERCIAL  
BUILDING

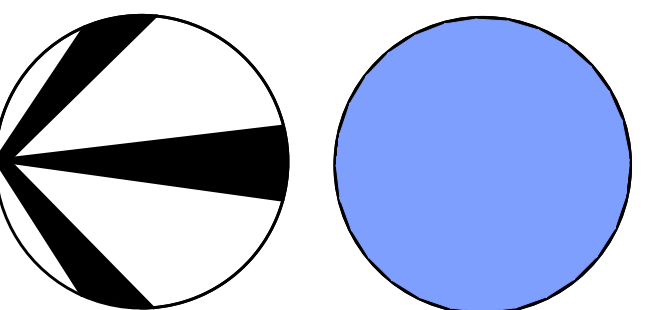
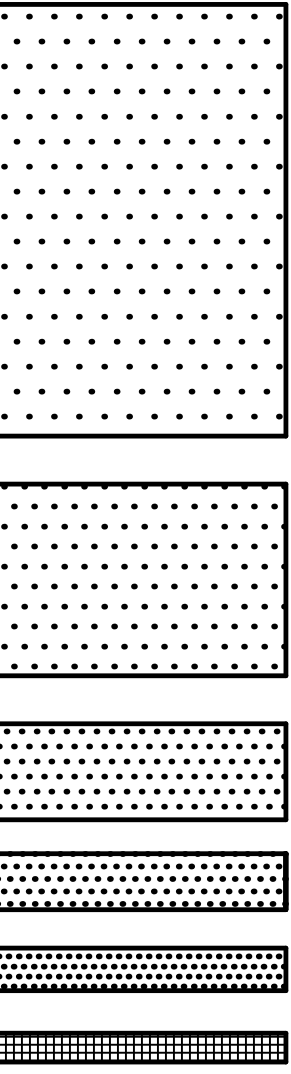
NARBONNE AVE

# ROOF PLAN

ISSUANCE
PLANNING REVIEW 7-20-15

REVISION

ROOF PLAN
250TH AND NARBONNE MULTI-USE 2154 250TH ST. & 25024 NARBONNE LOMITA, CA. 90717



GERALD W. COMPTON AIA

Job No. 88715110 Scale: 1/16"=1'-0"

1200 Artesia Blvd. Ste 300A  
Hermosa Bch., California  
90254 (310) 379-8222

GWC ARCHITECTS

A1.1

MULTI-USE