

RESIDENTIAL CONDOMINIUMS - AREA TABULATION:

21 UNITS @ 1910 SF / UNIT = 40,110 SF X 20% = 8,022 SF

UNITS A & B - 12 UNITS	1 UNIT	X 12
GROUND FLOOR		
GARAGE	414 SF	4968 SF
HABITABLE AREA	394 SF	4728 SF
PATIO AREA	VARIABLES	
SECOND FLOOR		
HABITABLE AREA	686 SF	8232 SF
DECK AREA	230 SF	2760 SF
THIRD FLOOR		
HABITABLE AREA	830 SF	9960 SF
DECK AREA	0 SF	0 SF
TOTAL HABITABLE	1910 SF	22920 SF
TOTAL DECK AREA	230 SF	2760 SF
UNITS C & D - 9 UNITS	1 UNIT	X 9
GROUND FLOOR		
GARAGE	434 SF	3906 SF
HABITABLE AREA	394 SF	3546 SF
PATIO AREA	VARIABLES	
SECOND FLOOR		
HABITABLE AREA	686 SF	6174 SF
DECK AREA	230 SF	2070 SF
THIRD FLOOR		
HABITABLE AREA	830 SF	7470 SF
DECK AREA	0 SF	0 SF
TOTAL HABITABLE	1910 SF	17190 SF
TOTAL DECK AREA	230 SF	2070 SF

PARKING REQUIRED - 2 CAR GARAGE PER UNIT + .25 PER UNIT GUEST = 5 GUEST SPACES
GUESTS PROVIDED - 10 SHARED SPACES

COMMERCIAL LOFT CONDOMINIUM BUILDING
INDUSTRIAL / STORAGE SPACE
AREA TABULATION PER FLOOR:

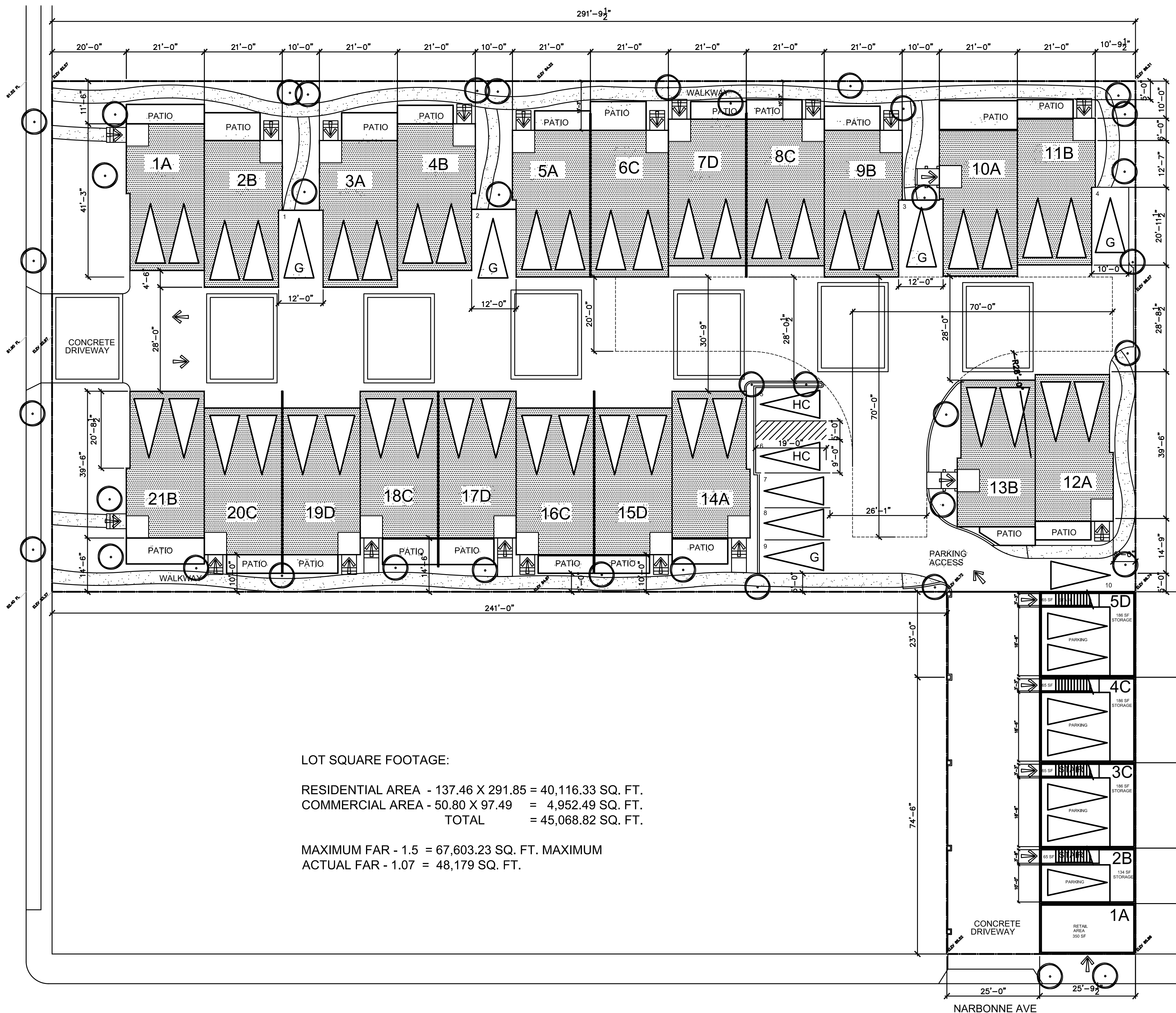
TOTAL LOWER FLOOR = 2513 SF
PARKING AREA = 1211 SF
7 COVERED PKG- 6 UNCOVERED AT LOT AREA + 4 SHARED GUEST SPACES - 17 SPACES PROVIDED (17.9 REQUIRED)

FRONT RETAIL SPACE = 350 SF 1 PER 300 (1.16 SPACES)
STORAGE AREA = 692 SF 1 PER 400 (1.73 SPACES)

TOTAL 2ND FLR AREA = 4212 SF WAREHOUSE-1 PER 400 (10.53 SPACES)
TOT MEZZ FLR AREA = 1344 SF OFFICE-1PER 300 (4.48 SPACES)

TOTAL BUILDING AREA = 8209 SF
PARKING- 18 SPACES REQD - 17 SHARED SPACES PROVIDED
PERCENTAGE OF RESIDENTIAL = 20.03 % OF HOUSING AREA

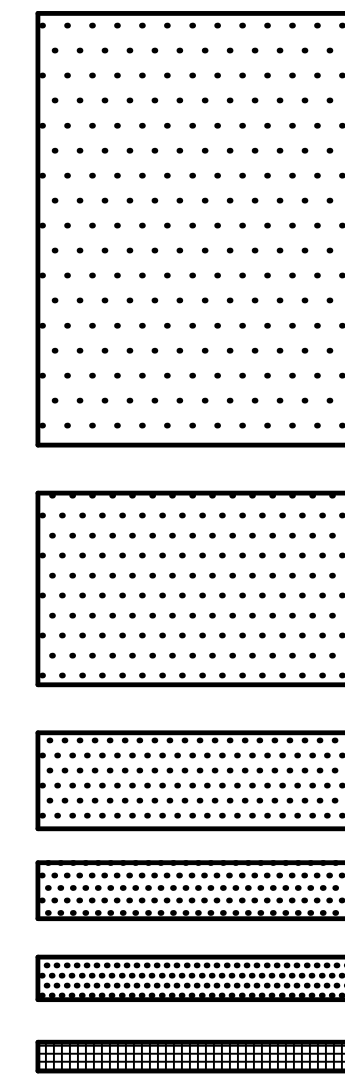
UNIT SUMMARY:	LOWER	UPPER	MEZZ	TOTALS
1A	350 SF	0 SF	0 SF	350 SF
2B	199 SF	1053 SF	336 SF	1488 SF
3C	251 SF	1053 SF	336 SF	1540 SF
4C	251 SF	1053 SF	336 SF	1540 SF
5D	251 SF	1053 SF	336 SF	1540 SF
HAB .BLDG SF	1302 SF	4212 SF	1344 SF	6858 SF
PARKING AREA	1211 SF	0 SF	0 SF	1211 SF
TOTAL / FLOOR	2513 SF	4212 SF	1344 SF	
TOTAL BLDG AREA				8069 SF



ISSUANCE
PLANNING REVIEW
7-20-15

REVISION

SITE PLAN / AREA TABULATION
250TH AND NARBONNE MULTI-USE
2154 250TH ST. & 25024 NARBONNE LOMITA, CA. 90717



NARBONNE AVE

SITE PLAN

GERALD W. COMPTON AIA
Job No. 88715110 Scale: 1/16"=1'-0"

1200 Artesia Blvd. Ste 300A
Hermosa Bch., California
90254 (310) 379-8222

GWC ARCHITECTS

A1

MULTI-USE