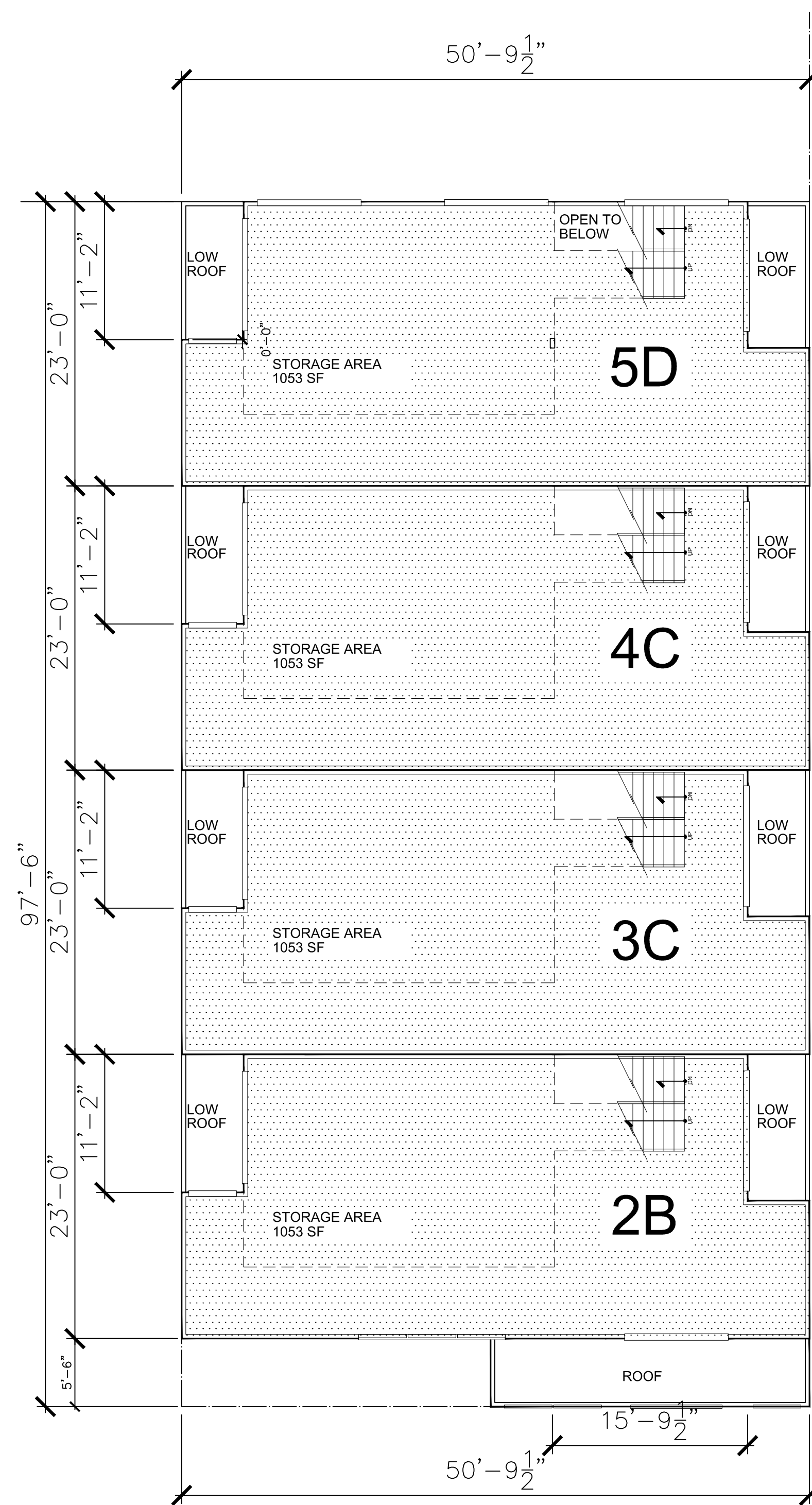
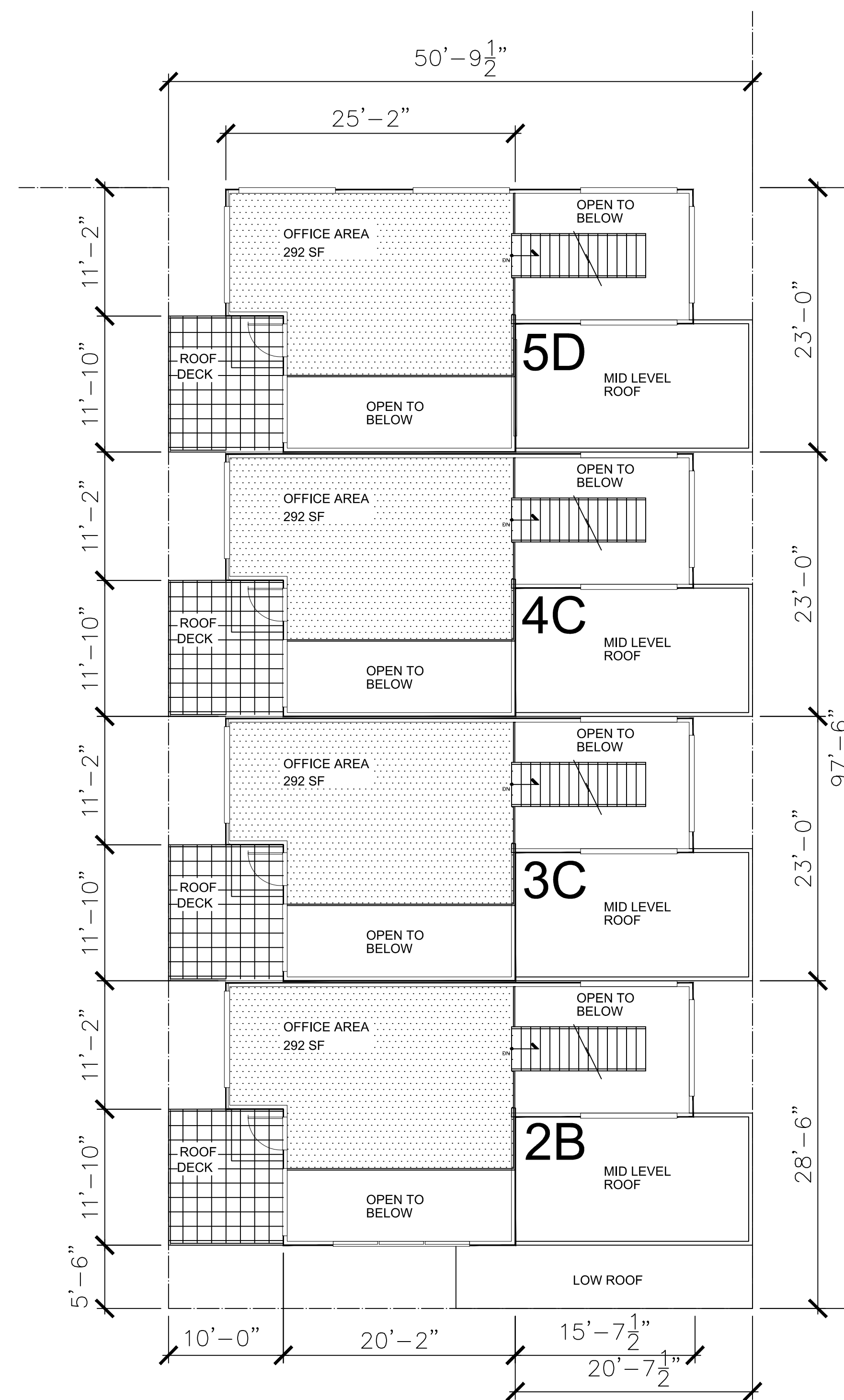


GROUND LEVEL
2513 SF



SECOND LEVEL
4200 SF

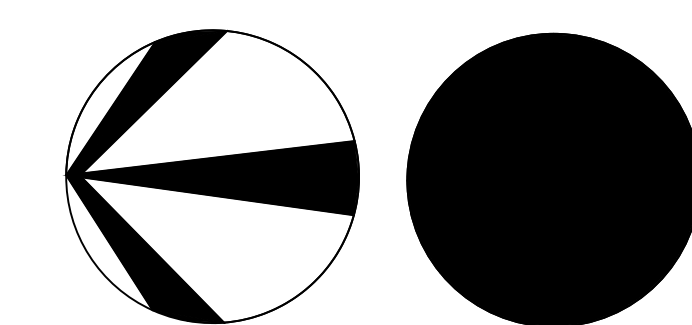
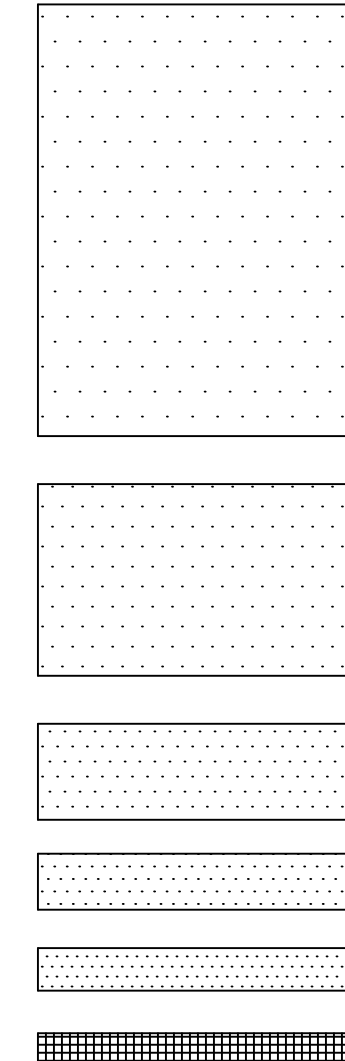


MEZZANINE LEVEL
1260 SF

ISSUANCE
PLANNING REVIEW
7-20-15

REVISION

FLOOR PLANS
250TH AND NARBONNE MULTI-USE
2154 250TH ST. & 25024 NARBONNE LOMITA, CA. 90717



GERALD W. COMPTON AIA
Job No. 88715110 Scale: 1/8"=1'-0"
1200 Artesia Blvd. Ste 300A
Hermosa Beach, California
90254 (310) 379-8222
GWC ARCHITECTS

A4.1

MULTI-USE

COMMERCIAL BUILDING PLANS