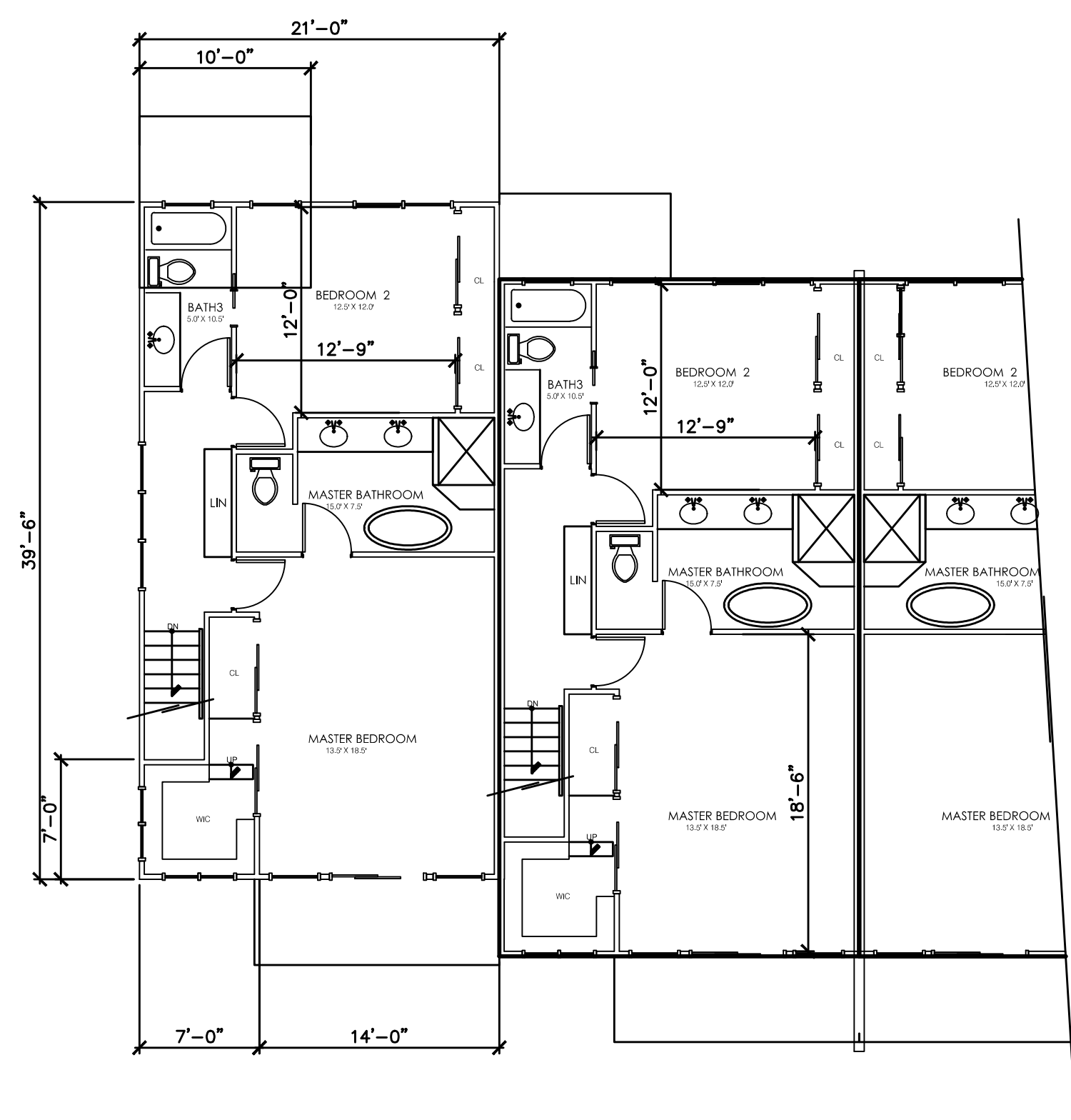


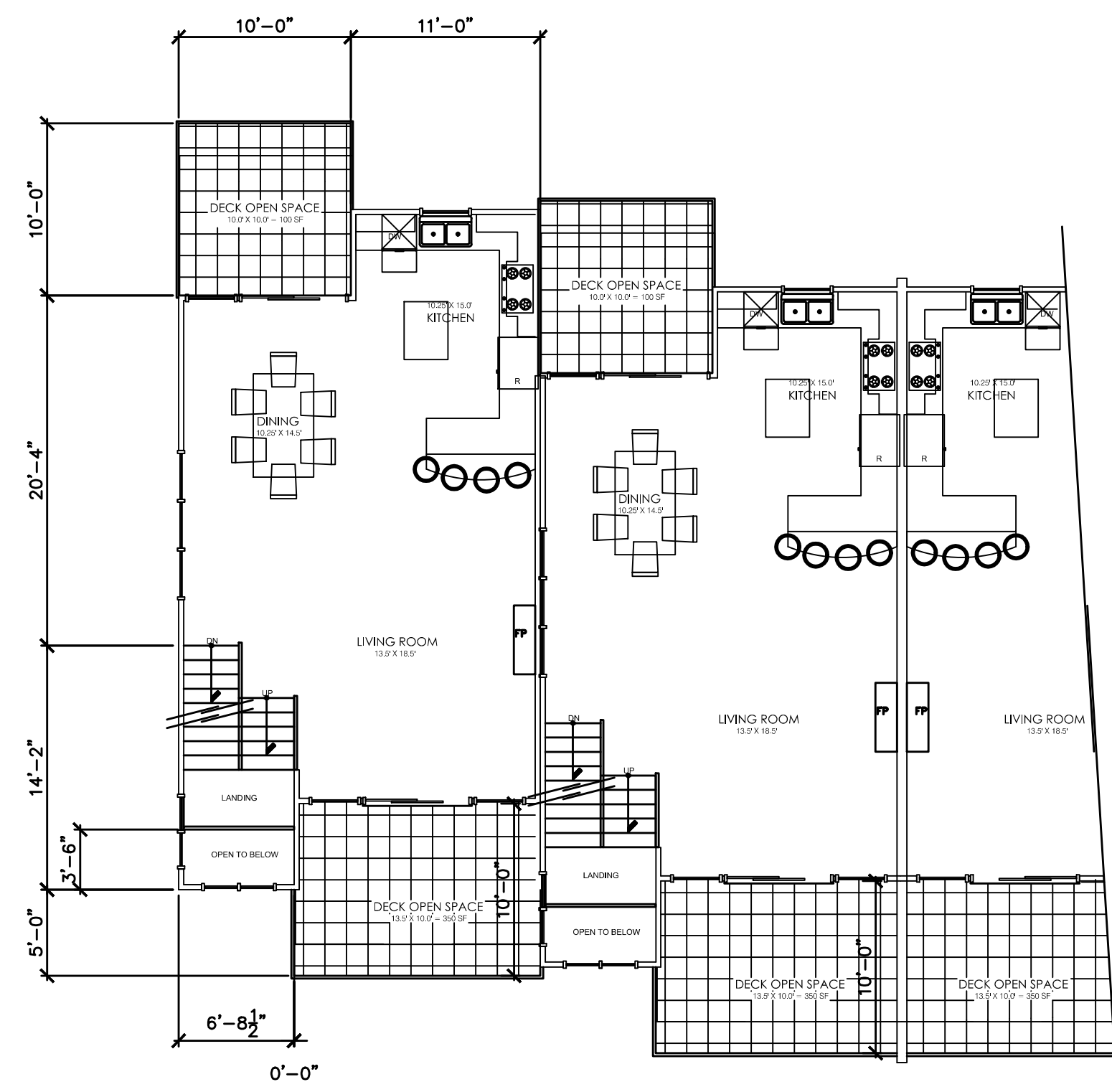
ISSUANCE  
 PLANNING REVIEW  
 7-20-15

REVISION

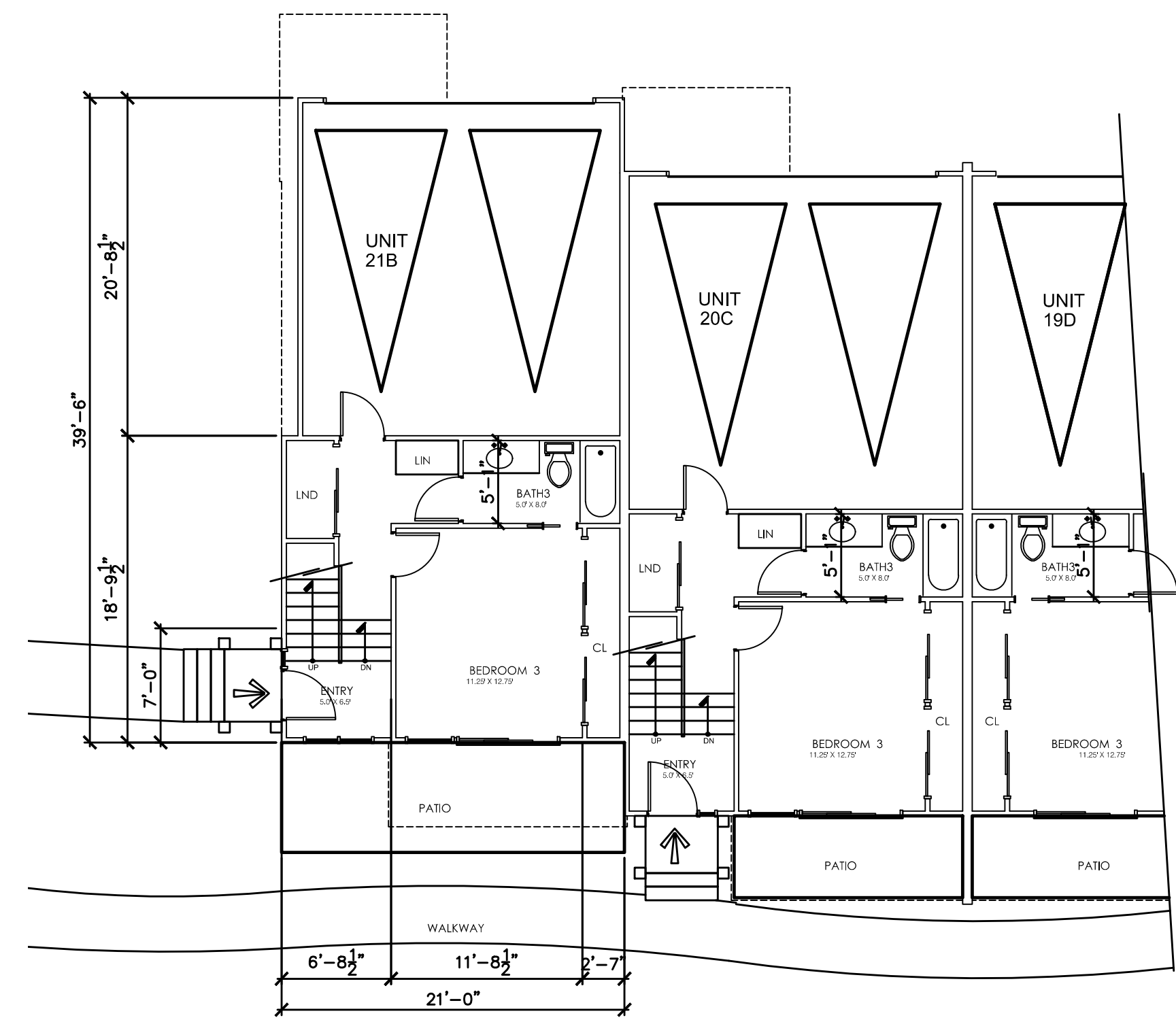
CONDOMINIUM UNIT PLANS  
 250TH AND NARBONNE MULTI-USE  
 2154 250TH ST. & 25024 NARBONNE LOMITA, CA. 90717



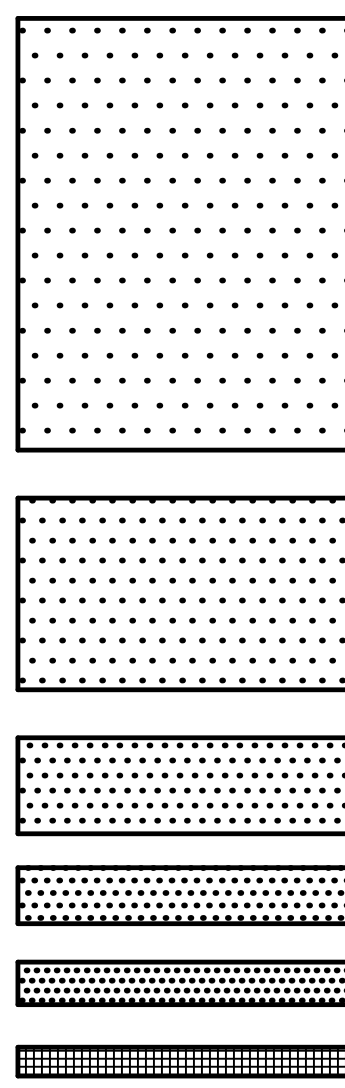
THIRD LEVEL FLOOR PLANS



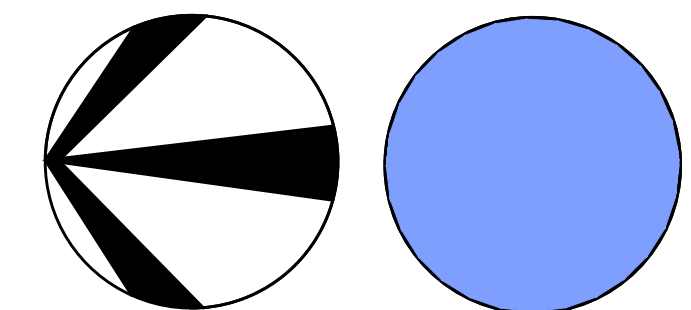
SECOND LEVEL FLOOR PLANS



GROUND LEVEL FLOOR PLANS



TYPICAL UNIT FLOOR PLANS – B, C & PARTIAL D UNITS  
 (A & D UNITS MIRROR IMAGES)



GERALD W. COMPTON AIA  
 Job No. 88715110 Scale: 1/8"=1'-0"  
 1200 Artesia Blvd. Ste 300A  
 Hermosa Bch., California  
 90254 (310) 379-8222  
**GWC**  
 ARCHITECTS  
**A4.2A**

MULTI-USE