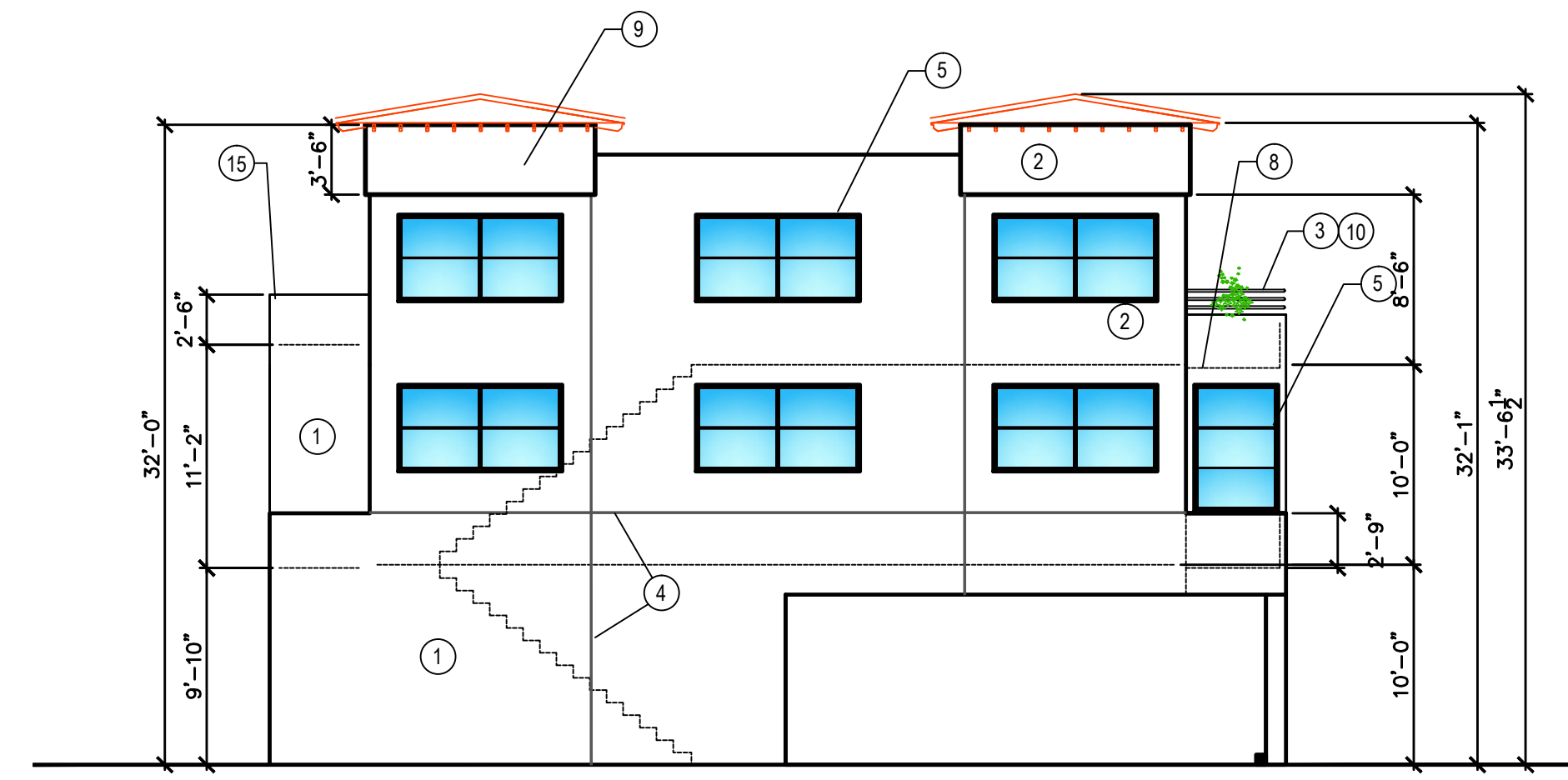


SOUTH ELEVATION



EAST ELEVATION



NORTH ELEVATION

- EXTERIOR FINISH SCHEDULE:
1. SMOOTH FINISH STUCCO - LIGHT BROWN)
 2. SMOOTH FINISH STUCCO - MEDIUM BROWN)
 3. GALV. STEEL GUARDRAIL - DARK BROWN TRIM
 4. FRYE REGLET - ALUMINUM STUCCO SCREED
 5. ANODIZED ALUMINUM WINDOW SASH W/ BLUE TINTED GLASS - TYPICAL
 6. STOREFRONT WINDOW WALL UNIT
 7. SECTIONAL ROLL-UP GARAGE DOOR
 8. DEKOTEX OR APPROVED EQUAL DECK'G
 9. APPROVED TORCH DOWN ROOFING
 10. HANDRAIL-36" OR GUARDRAIL-42"
 11. PLANT SHELVE
 12. LOW ROOF AREA - TORCH DOWN TYPICAL
 13. 3X3 DRAIN SPOUT
 14. DECK ENTRY ROOF OVERHANG
 15. 30" PARAPET WALL AT PROP LINE
 16. COLUMN AT GROUND LEVEL
 17. RED TILE ROOF TOWER

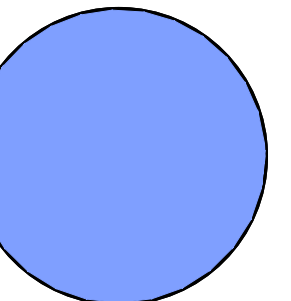
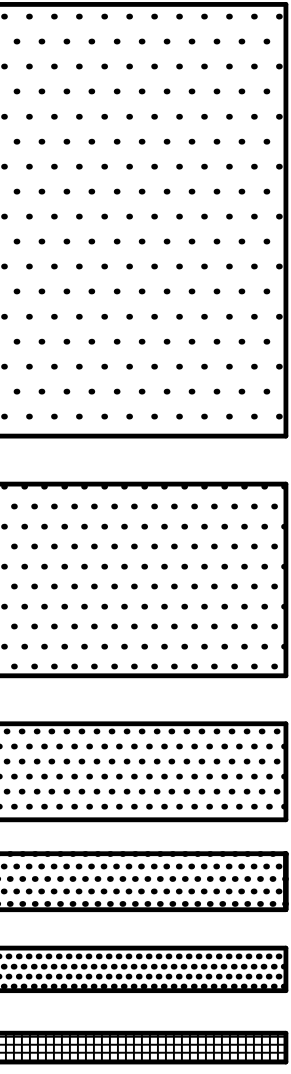


WEST ELEVATION

ISSUANCE
PLANNING REVIEW
7-20-15

REVISION

COMMERCIAL CONCEPT ELEVATIONS
250TH AND NARBONNE MULTI-USE
2154 250TH ST. & 25024 NARBONNE LOMITA, CA. 90717



GERALD W. COMPTON AIA
Job No. 88715110 Scale: 1/8"=1'-0"
1200 Artesia Blvd. Ste 300A
Hermosa Bch., California
90254 (310) 379-8222
GWC
ARCHITECTS

A5.1

MULTI-USE