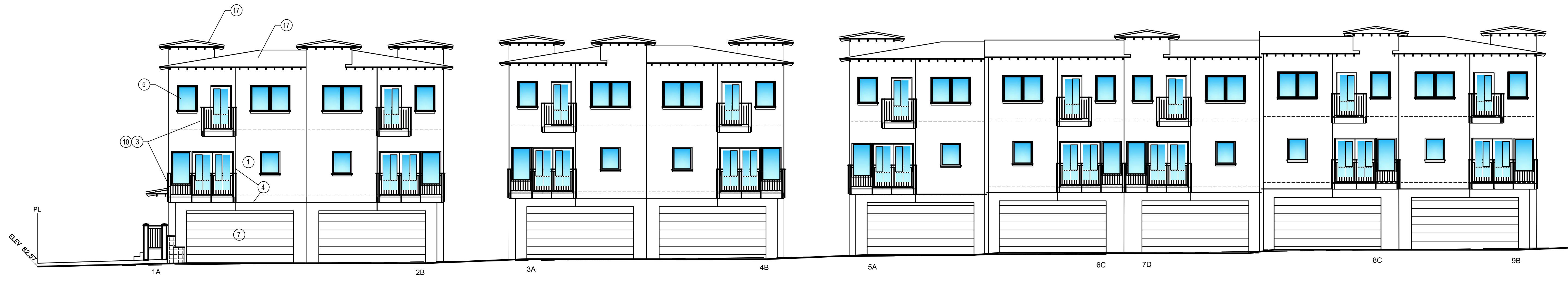


ISSUANCE
PLANNING REVIEW
7-20-15

REVISION

CONDOMINIUM ELEVATIONS
250TH AND NARBONNE MULTI-USE
2154 250TH ST. & 25024 NARBONNE LOMITA, CA. 90717



WEST ELEVATION
UNITS 1-9

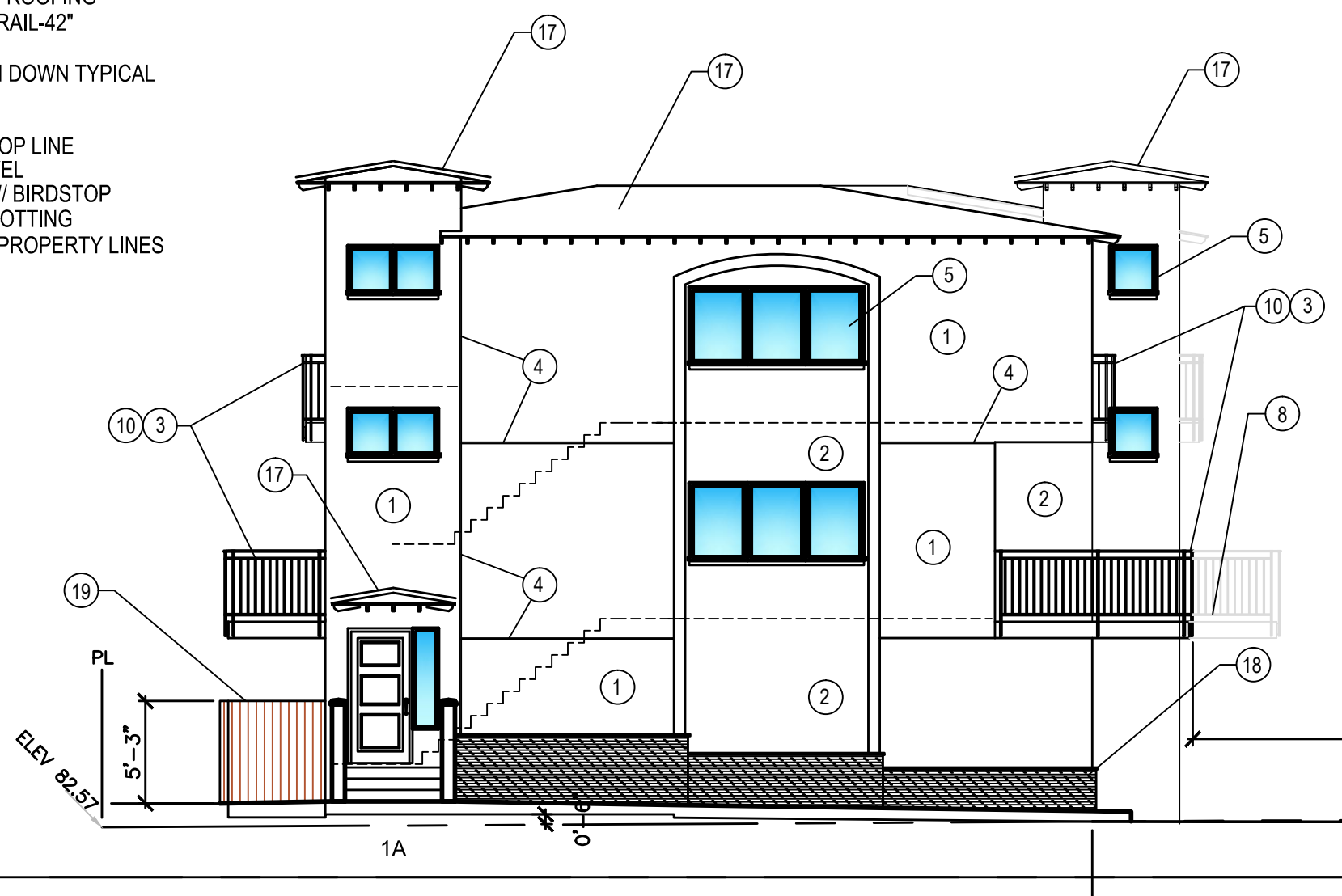


EAST ELEVATION
UNITS 1-9

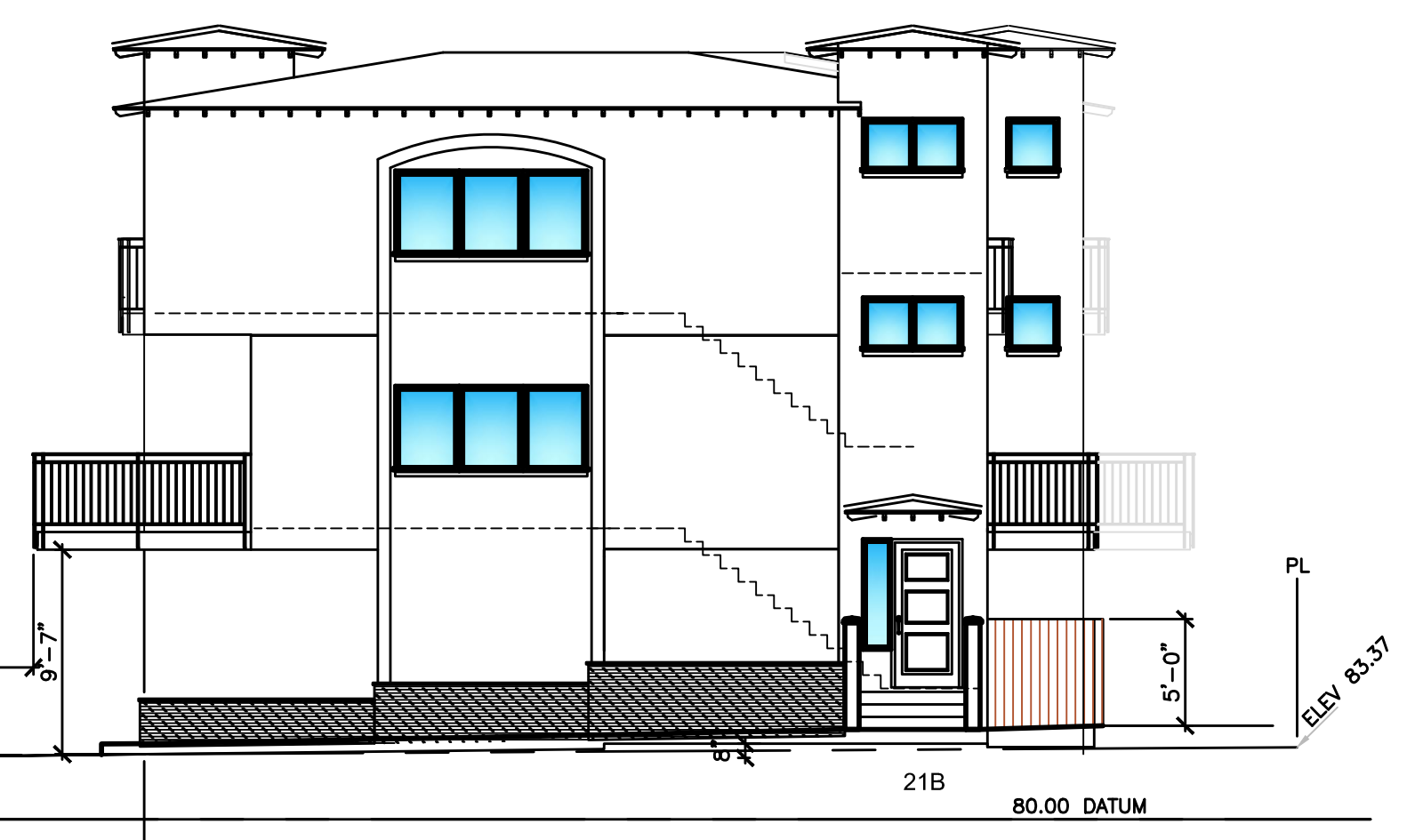
- EXTERIOR FINISH SCHEDULE:
1. SMOOTH FINISH STUCCO - LIGHT BROWN
 2. SMOOTH FINISH STUCCO - MEDIUM BROWN
 3. GALV. STEEL GUARDRAIL - DARK BROWN TRIM
 4. FRYE REGLET - ALUMINUM EXPANSION JOINT
 5. ANODIZED ALUMINUM WINDOW SASH W/ BLUE TINTED GLASS - TYPICAL
 6. STOREFRONT WINDOW WALL UNIT
 7. SECTIONAL ROLL-UP GARAGE DOOR
 8. DEXOTEX OR APPROVED EQUAL DECK'G
 9. APPROVED TORCH DOWN ROOFING
 10. HANDRAIL-36" OR GUARDRAIL-42"
 11. PLANT SHELF
 12. LOW ROOF AREA - TORCH DOWN TYPICAL
 13. 3X3 DRAIN SPOUT
 14. ENTRY ROOF OVERHANG
 15. 30" PARAPET WALL AT PROP LINE
 16. COLUMN AT GROUND LEVEL
 17. RED TILE ROOF - S TILE W/ BIRDSTOP
 18. STACKED STONE WAINSCOTTING
 19. 6' FENCE AT PATIOS AND PROPERTY LINES



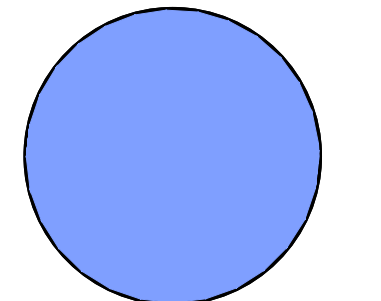
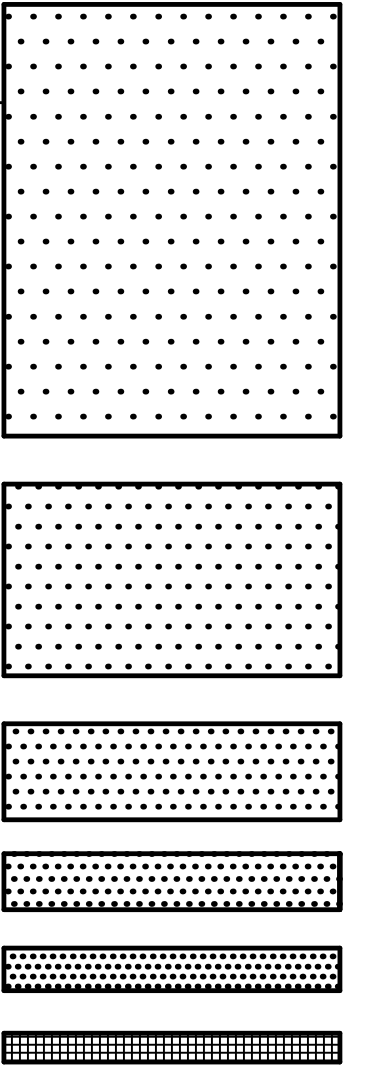
EAST ELEVATION
UNITS 10-11



NORTH ELEVATION
UNIT 1



NORTH ELEVATION
UNIT 21



GERALD W. COMPTON AIA
Job No. 88715110 Scale: 1/8"=1'-0"

1200 Artesia Blvd. Ste 300A
Hermosa Beach, California
90254 (310) 379-8222

GWC ARCHITECTS

A5.2

MULTI-USE